

Inside this issue.....

Presidents Report	p.2
Littoral Rainforest Workshop	p.3
What Landcarers are doing at...	p.4
Funding Opportunities	p.5
Coastal Farming Project and Enc ³	p.6
CHRL Library update	p.7
Indian Myna Workshop	p.8
Regional Landcare Facilitator	p.9
More Grants	p.9
Soil Resources	p.10
Worksite News	p.11

DATES & EVENTS

5/09/10 Eileen Moody Landcare Awards

5-12/09/10 Landcare Week – drop in and see us in the City Centre on Market Day

9/09/10 Indian Myna Workshop

20/09/10 (TBC) Coastal processes and erosion workshop

20-21st Oct 2010 CSO/Landcare/AEPO Workshop

Oct start 2010: Dorrigo Prograze

17/10/10 Botanica Sustainable Living Festival

March 2011: Landcare Sustainable Farming Day. A joint field day held in conjunction with Bellinger Landcare



Welcome to another edition of the Bush to Beach News.

Normality is slowly returning to the CHRL office after a very hectic start to the year. Our River Reach planning projects at Camp Creek and Brooklana are wrapping up and the NRCMA funded Flood Recovery project in the Orara Valley is just about finished. On the coast though things are just getting going with the NRCMA funded Enc³ (see page 6 for more info) projects just getting underway. On this front we are glad to have Alastair Maple out there on the ground chatting to the groups and working through project ideas with them.

This years CHCC Environment Levy projects will also be getting under way soon. CHRL has received just under \$100,000 from council to support volunteers in the Coffs LGA through the provision of tools, training and bush regeneration contractor support on volunteer worksites. We are very lucky in Coffs Harbour to have this level of local government support and we appreciate the ongoing commitment council has given Landcare in the region.

The past couple of months have also seen the start of some new Landcare worksites in Coffs Harbour. Woolgoolga High School has joined CHRL and will be starting work in the Regional Park adjacent to the school grounds and a group of residents from Sapphire have started a new site near White Bluff.

Finally the 2010 Landcare Week and Weedbusters Week will be held between the 6th and 12th of September. This year CHRL will be having a combined display with CHCC and the Orara Project in the City Centre on Thursday the 9th. Drop down and see us and if you have any weed samples you would like identified bring them with you.

Craig Stehn.



President's Report

Members have been very active in recent months in holding Landcare displays at the Nana Glen market day, Woolgoolga Curryfest and the Orara Fair. All of these events were very well attended and our displays drew a lot of interest.

These events are a great opportunity to inform the public of what we do and to create awareness of many of the environmental issues that are relevant to our district. The Indian Myna trap always attracts a lot of attention at these events. The majority of the public seem to be aware of mynas and the harm they do to our native birds. This is a big difference to when we began to promote myna trapping 5 years ago. At that time the public seemed totally unaware of these pests in our area or the harm they do.

The Indian Myna working party met recently to assess the progress of the two year Environmental Trust grant project for the Coffs Harbour, Bellingen and Nambucca local government areas. The project is progressing well with over 100 myna trappers in the Coffs Harbour LGA and around 700 mynas trapped in the last 12 months. Our project officer Tien Pham will manage the programme in 2 days per week instead of the 3 days per week she has been doing. This will mean that she will have less time to spend in each LGA, but we now have a good network of key people to keep the programme progressing well. We are always able to use more volunteers to assist in reporting the presence of mynas, as well as assisting in trapping.

Congratulations to our new executive team. Maureen Joyce will be in the Secretary role

now after Elisabeth Edwards had to vacate the position after holding it for the past four years. Also joining the committee will be a very familiar face to CHRL members. Jenny Hood (nee Mulchrone) will be joining the committee this year and we welcome her in this role.

The past financial year has been the biggest for CHRL to date with 10 projects being run by CHRL over this period. The previous year also saw the continued support of Landcare in the Coffs region by both the Northern Rivers Catchment Management Authority and Coffs Harbour City Council. The work we achieve through these partnerships far exceeds what we can achieve alone.

Finally, I urge all members to get their voluntary hours work records to the CHRL office, if you have not already, so that Craig can collate the hours worked, trees planted and other environmental gains in a form that can be passed up to all agencies and levels of government to make them aware of what we achieve with the funding we receive and the exceptional value they get for their money.

Keep up the good work.

R McSmith





CHRL recently hosted a group of NRM professionals from PNG and Samoa who were in Australia as part of the Australian Leaderships Awards – Fellowships (ALAF) *Sustainable Land Management and Climate Change in the Pacific* program. The group visited sites on the Eastern Dorrigo and Upper Orara and were particularly impressed by what has been achieved through the partnering of private landholders, Landcare and Local and State Government agencies.

Littoral Rainforest Workshop

As part of the Coordinating Community Engagement and On Ground Actions on the Coffs Coast project, a successful workshop “*Littoral Rainforest: Identification, management and traditional use*”, was held at The Botanic Gardens on 29th June.

Alex Floyd, author of “*Rainforest trees of Mainland South-eastern Australia*”, presented a session of slides identifying species in Littoral Rainforest.

Tim Scanlon, Pest Species Officer for NPWS, spoke of common weed species, and the threat of weeds being the biggest challenge to ensure rainforests continued healthy existence.

The best ways of addressing key threats in littoral rainforests was covered by Damien Lett, Regional Park Field Officer with NPWS.

The day was rounded off with an interpretive walk through the Littoral Rainforest Remnant at Diggers Head. Mark Flanders, Discovery Ranger with NPWS, led this walk explaining indigenous cultural connections and traditional foods of the area.



What Landcarers are doing at.....



Enviro coordinator Malila, with Landcarers Wena, Sharly, Judy and Aloka

BUNDAGEN LANDCARE

Bundagen is an intentional community of about 100 adults and their children, 25 kilometers south of Coffs Harbour, and bordered by Bongil Bongil National Park.

Malila, a resident of the community since 1981, has been active in Landcare for many years, and is the current Enviro Coordinator at Bundagen.

"We have a group that regularly works every Tuesday morning. A lot of our recent work has been along the sides of Ridge Road, which is the main thoroughfare through the community", said Malila. "After Tuesday mornings work, we usually go to the Main Building at Bundagen for our regularly weekly community lunch with many of the other residents and their visitors. It's something we look forward to after our work."

The Bundagen group is also looking forward to the possibility of securing funding from the On Ground Coastal Works Project. The Northern Rivers Catchment Management Authority has made this available, with a grant to Coffs Harbour Regional Landcare. "This will provide an opportunity to remove the last of the groundsel and lantana from the creek that runs through part of the property", said Malila.

The group then plans to plant out the banks of the creek with local riparian species.

EASTERN DORRIGO

Leigh Priestley runs a beef producing property on Camp Creek Road, Lowanna, and is a strong advocate for sustainable farming.

A member of Eastern Dorrigo Landcare group, and with 40 years experience in rural activities, including farm management, teaching agriculture and management of the Rural Lands Protection Boards, he is well placed to judge the merits of farming in a sustainable way.

"I do soil testing to determine top dressing in accordance with my results" says Mr Priestley. "I've also aerated some of the paddocks, sowed improved pasture on about 40% of the grazing area, and fenced to reduce paddock size."

Smaller paddocks means the stock have to utilize more of the available pasture, not just concentrating on the "good bits".

Leigh has developed a property plan in accordance with his aims. He has already installed three dams, undergone extensive weed control and established 400 metres of shelter belts. Ultimately, the six kilometres of remaining gullies and creeks will be fenced, with water reticulation to all paddocks. Native vegetation will be encouraged and established with further shelter belts of up to 600metres.

"The eventual aim is that 15% of my holding will be excluded from grazing, providing a barrier and filter to the creeks. The increase in biodiversity will also have production benefits and these benefits will offset any loss of grazing acreage", Leigh concluded.

Funding Opportunities

Best Management Practice for Soil Health in Horticulture, 2010-11 Grants

Expressions of Interest

The Northern Rivers Catchment Management Authority (NRCMA) has funding available to assist landholders to implement activities outlined in recently published Best Management Practice guidelines for specific horticultural industries.

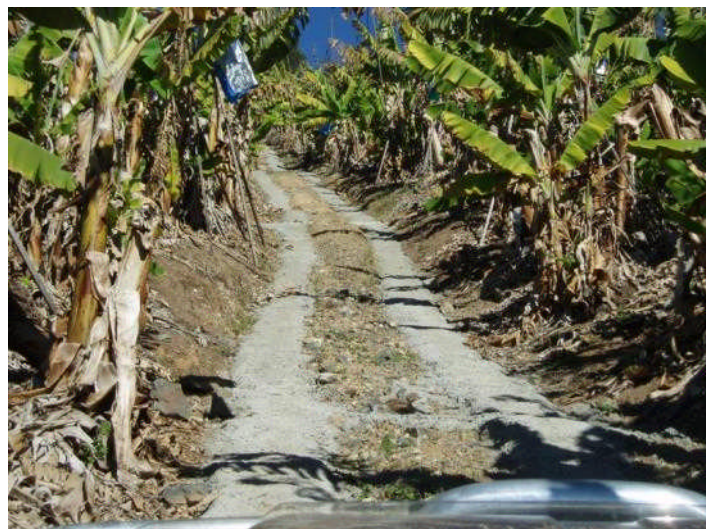
We are currently seeking expressions of interest from individual landholders in the Blueberry, Banana, Coffee, Macadamia, Vegetable and other Perennial Horticultural Industries. The targeted areas for this project are Cudgen, Alstonville, Coffs area steep lands, Comboyne and North Coast banana lands.

Technical assistance will be available for applicants to assist in the preparation of site plans or works plans, and successful projects will need to be planned and implemented in accordance with sound soil conservation principles and soil best management practice guidelines.

Eligible activities for funding are outlined on the Expression of Interest form available from the NRCMA website (shown below). Funding must be complemented with in-kind contributions from the landholder.

This project is funded by the Australian Government's Caring for our Country program.

The call for EOIs will be open for 4 weeks, closing date 4pm, Friday 27 August 2010. - For an Expression of Interest form, go to our Funding-How to Apply page. Further assistance contact Gerry Ryan on (02) 6627 0125 for northern areas, or Northern Rivers Catchment Management Authority (Alstonville office) on (02) 6627 0170; or Lindy Brown at Kempsey Office on (02) 6561 4962 for areas south of Grafton.



Banana tracks concreted through a previous steep lands project



Junior Landcare Grants

Coles Junior Landcare Grants

Date: March 2011

Description: Schools and youth groups can apply for grants of up to \$1000 (ex GST) to create gardens in their school or community such as bush tucker, waterwise or vegetable gardens.

Contact:
<http://www.juniorlandcare.com.au/coles/>

Yates

Date: 22 October 2010

Description: School Environmental Management Planning (SEMP) Grant of \$1000. SEMP grants are awarded quarterly through the school year and help students plan for sustainable environmental practices.

Contact: <http://www.juniorlandcare.com/yates>

Coastal Farming Incentives Project Update

Coffs Harbour Regional Landcare, with the support of the Northern Rivers Catchment Management Authority has delivered a project aimed at assisting landholders to adapt to the impacts of climate change.

A total of 19 farmers were successful in gaining financial assistance for a variety of projects. These range from installing a concrete feed pad for dairy cattle, soil aeration and alternative methods of fertilisation, through to fencing smaller paddocks for improved utilisation of available feed.

"It's been great to see such a variety of different projects aimed at improving soil health", said Project Officer Alastair Maple. "The Catchment Management Authority are also pleased with the result, but they have also provided terrific assistance"

As part of this project, CHRL has also purchased an aerator. This will be available for hire on a cost-maintenance basis, for farmers to "try before you buy", or to continue hiring for future occasional use.

What is Enc³?

"Engaging NSW Communities in Coastline Conservation" (ENC3), is a \$3.5m state-wide project being implemented by the Northern Rivers Catchment Management Authority (CMA) in partnership with the other coastal CMAs (Hunter-Central Rivers, Hawkesbury-Nepean, Sydney Metro and Southern Rivers) during 2009-11, funded by an Australian Government Caring for our Country (CfoC) competitive grant.

With the project now almost 12-months underway, 386 community organisations are in the process of being engaged in a wide range of projects to increase native habitat, reduce weeds and the future resilience of coastal landscapes and their biodiversity. Other activities include hosting the next NSW Coastal Volunteers Forum to assist with increasing volunteer participation, the sharing of ideas and maintaining a cooperative community approach, and an Underwater Volunteer Project to increase participation & increase the capacity of underwater volunteer groups so that they are better able to provide data that can be used for managing marine habitats and communities along the entire NSW coast.

Within the Northern Rivers, 13 large-scale (\$20-50K) and 18 small-scale (\$5-20K) grants have been made to community groups for coastline conservation projects across north, central and southern areas; totalling approx. \$887,000.00, with funds spread across the two years.



OUR LIVING COAST

towards Sustainability for our Region

Solar & Wind Energy - Solar Hot Water Community Seminar 25th August 2010, 2 pm CWA Room, Dorrigo

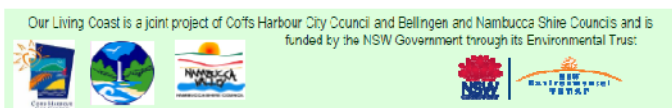


Photovoltaic installation, Rigby House, Coffs Harbour

- How does it work?
- How many panels?
- Which hot water system?
- What does it cost?
- What is the payback period?
- What Incentives are available?

Presenters: Peter Bulanyi (Energy) & Gwen Hanna (Hot Water)

Please call Pia Dollmann on 6648 4644 to register.



Part of the Korora Dunecare site where works will take place under the ENC3 project



This year BCU donated more than \$1,700 to CHRL as part of its Community Saver Programme.

This was thanks to 17 supporters nominating CHRL as their recipient organisation.

You can be a supporter too.....

A BCU Community Saver Account (CSA) gives you an attractive rate of interest on your savings while generating funds for Coffs Harbour Regional Landcare!

How does it work?

You open a BCU Community Saver Account and nominate CHRL as your recipient organisation. Start saving, then once a year BCU will donate an amount equal to 1% of the average annual balance held in your CSA to Coffs Harbour Regional Landcare.

Tell your family and friends to do the same, after all, the more CSA accounts held by CHRL members & supporters, the greater the overall benefit to CHRL.

For more information contact BCU Direct on: 1300 228 228 or follow this link:

http://www.bcu.com.au/personal/savings_accounts/community_saver_account



New Books in the CHRL Library

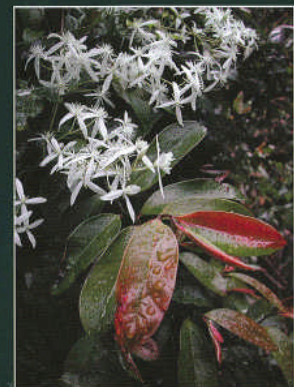
The Coffs Landcare Library has some new books on the shelf thanks to the funding CHRL received through the NRCMA ENC³ (*Engaging NSW Communities in Coastline Conservation*) project. Some of the new titles are:

- Rainforest Trees and Shrubs: A field guide to their identification
- Rainforest Climbing Plants: A field guide to their identification
- Rainforest Restoration Manual for South-Eastern Australia
- Rainforest Trees of Mainland South-Eastern Australia
- Australian Rainforests Vol. 1

All of these books are available for loan to CHRL members and provide a great way to get a deeper understanding of rainforest diversity, ecology and restoration

RAINFOREST RESTORATION MANUAL

for South-Eastern Australia



Bill Peel



COMMUNITY INDIAN MYNA CONTROL WORKSHOPS

BELLINGEN:

Friday 3rd September
CWA Hall, Church St
10.00am – 12.30pm

NAMBUCCA:

Wednesday 8th September
Entertainment Centre, Ridge St.
1.00pm – 3.30pm

COFFS HARBOUR:

Thursday 9th September
Cavanbah Centre, 191 Harbour Dr.
10.00am – 12.30pm

COST:

FREE with morning/ afternoon tea provided.

The course will cover:

- Indian Myna Profile - biology and behaviour
- Correct species identification/ Myna look a likes
- Impacts of Indian Mynas
- Indian Myna Control – trapping and other strategies
- Establishing an effective trapping network in your community

***For bookings call Tien (Indian Myna Project Officer) on
0438 218 261***

North Coast Regional Landcare Facilitator Project

The North Coast Regional Landcare Network (NCRLN) has been successful in their application to host the Regional Landcare Facilitator position (RLF) in the Northern Rivers CMA region. In total the Australian Government has funded 52 facilitator positions across Australia. The RLF program has a sustainable farming focus and aims to build links between farmers, industry groups and Landcare, and increase the uptake of Best Management Practices across a broad range of industries.

The executive committee of NCRLN are now working on the recruitment of the RLF and job descriptions and advertisements should be out shortly.



Community Action Grants

Community Action Grants are the small grants component of the Australian Government's Caring for our Country initiative that aims to help community groups take action to conserve and protect their natural environment. The grants are targeted towards established community-based organisations which have sustainable farming and/or protecting and enhancing the natural environment as their principal objective.

Investment proposals are sought from environmental, Indigenous, Landcare, Coastcare and sustainable agriculture community groups for grants of between \$5000 and \$20 000 (GST exclusive) to take action to help protect and conserve Australia's environment. Projects must be completed within 18 months.

The grants are available to groups currently operating in the environmental and sustainable land management arena, and to established and emerging Indigenous organisations. Individuals are not eligible to apply for Community Action Grants.

Community Action Grants support local activities such as tree planting, revegetation, dune rehabilitation, field days, improving land management practices, and recording and use of traditional ecological knowledge.

Applications for 2010-11 Community Action Grants close at 5pm (AEST) on 31 August 2010. For more details go to:

<http://www.nrm.gov.au/cag/index.html#guide>

Fisheries Habitat Action Grants

Angling clubs, individuals, community groups, local councils and organisations interested in rehabilitating fish habitats in freshwater and saltwater areas throughout NSW can apply for grants.

Habitat rehabilitation projects which may be funded include; removal or modification of barriers to fish passage, rehabilitation of riparian lands (river banks, wetlands, mangrove forests, saltmarsh), re-snagging waterways with timber structure, removal of exotic vegetation from waterways, bank stabilisation works and the reinstatement of natural flow regimes. Funding applications must relate to the enhancement of recreational fishing through the improvement of fish habitat. Successful projects are usually funded for one year, however funding may be sought for multi-stage projects that take place over a number of years (e.g. two or three year projects). For further information or to obtain a funding application form contact the Habitat Action Program coordinator on fish.habitat@industry.nsw.gov.au or ring (02) 6626 1107.

Soil Carbon & Soil Health Resources

Biochar basics

Biochar is an extremely complex stable form of carbon produced by the controlled heating of plant and/or animal material (biomass feedstock) at high temperatures (350 - 600oC) in a low oxygen environment. The technique of heating in a low oxygen environment is called pyrolysis. Biochars complex chemical structure is defined by the feedstock it is made from and the temperature conditions used in its manufacture. Biochar is a form of charcoal but is different in that biochar is produced in controlled conditions so that most of the carbon is converted to usable products. This Primefact covers the following topics; Are all biochars the same? What are the benefits to agriculture? Can I make my own biochar? and biochar and climate change.

For more information go to:

<http://www.dpi.nsw.gov.au/agriculture/resources/soils/soil-carbon>



Soil Health Knowledge Bank

This site has been developed for farmers and the wider industry to provide an overview of current soil health knowledge and tools to assess soil condition – providing information on soil properties, processes and management for profit across a range of industries and regions. Topics include:

- What is healthy soil? Top tips for healthy.**
- An overview of soil health.**
- Help diagnose my soils. Profiting through soils.**

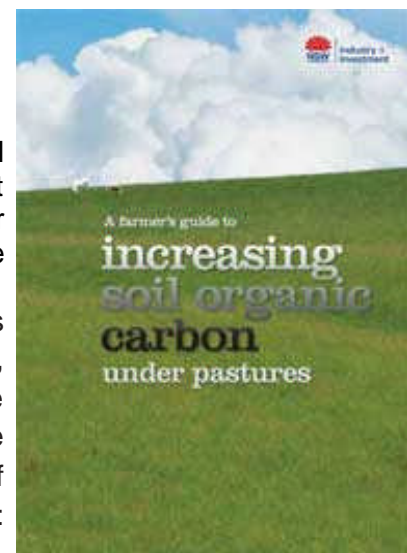
For a closer look at this website, go to:

<http://www.soilhealthknowledge.com.au/>

A farmer's guide to increasing soil organic carbon under pastures

This book is based on findings from a three year project investigating soil carbon levels in pastures under different management systems in south east NSW. It is designed to be of practical use to farmers who want to increase their soil carbon levels. It includes basic information on soil carbon and reports the project's findings regarding the impact of pasture management on soil carbon. This booklet aims to provide a practical guide to soil carbon under pastures. It is the product of a three year project looking at soil carbon levels under pastures, and the researchers have taken the opportunity to expand it from a simple report of project results to include further information on soil carbon that will be of interest to farmers, particularly graziers. We will be trying to get copies of this booklet for the CHRL office but in the meantime go to:

<http://www.dpi.nsw.gov.au/agriculture/resources/soils/soil-carbon>



CHRL Worksite News

Arrawarra Coastcare Site: Volunteers working monthly on littoral rainforest at the southern end of Corindi Beach

Arrawarra Headland Landcare Site: Are holding working bees with the assistance of NPWS Ranger.

Bakker Drive: Working one Saturday a month removing Privet and Camphor from the reserve at the end of Bakker Drive. Contact Geoff Cohen on 6653 5891 for more information.

Bundagen Landcare: A new sub-group has just started in the Bundageree village who will be focusing on revegetating the creek that passes through the village.

Crystal Waters Landcare Site: Volunteers are now working with National Parks in Coffs Coast Regional Park at Sapphire – maintaining the dunes and the headland – White Bluff. On site 1st Sunday of the month. Contact: Tim and Jennie 02 6656 4158

Eastern Dorrigo Landcare Site: The group continues to work on riparian zones, both on public & private land. We will be active in the Clean Up Aus day again this year. The group will assist local landowners who were successful in gaining funds from CMA.

Emerald Beach Community Dunecare: Are meeting monthly to remove weeds around Fiddaman's Creek and Emerald Beach.

Friends of Coffs Creek: Meet fortnightly on Saturdays & weekly on Mondays. Ph Elisabeth Edwards for more information 6651 5380

Jetty Dunecare Group Inc: Are continuing their bush regeneration work in the Jetty area. Volunteers meet Tuesdays, Saturdays and Sundays from 7.30am. Ph Jane Ireland for more information 66524389.

Karangi Landcare Group: Are meeting monthly to weed areas around the Cemetery .Contact: Ron Smith, 66538249

Karangi Public School: Karangi School student continue to work along Karangi creek each fortnight.

Korora Basin Landcare Site: Have taken on new volunteers and are meeting monthly, contact Kris Hely, 66536781

Mullawarra Dunecare Site: Meeting on the last Saturday of the month. Contact Roger Jennings, 66541203

Nana Glen Landcare Group: Have commenced work on a NRCMA bio-grants project in conjunction with Nana Glen School

Narranga Primary School: Recently spent their start-up grant funds on nest boxes for possum and native birds to improve the biodiversity along the creek adjacent to the school.

Park Beach Dunecare Site: Volunteers work individually on a regular basis to remove noxious and environmental weeds.

Safety Beach Dunecare Site: The group are having monthly working bees and working closely with National Parks staff.

Sapphire Reserve Landcare Group: A new group just starting out – more to come.

Sawtell Community Bushcare: A couple of new members have joined this site. The Council is hoping the volunteers will assist with the approved works in the adopted Dolmans Point Action Plan.

Sawtell Dunecare: Continue to remove weeds, plant local natives & remove man-made rubbish from the beach.

Serenity Landcare: Volunteers are working along Serenity Beach and Look at me now Headland.

Shepherds Lane: A group of local residents improving the condition of their roadside reserve. Contact Alan Bithell on 6652 8665.

Woolgoolga Main Beach Dunecare: Are continuing their good work with working bees carried out every Monday and Wednesday from 8am to 12 on the dunes.

Woolgoolga Back Beach Dunecare: Recently reformed with keen new volunteers. Working bees held the 1st Sunday each month 9am-noon. Meet at the backbeach picnic area. Ph: Alex Groot, 6654 2833

Woolgoolga High School: Another new group that are in the process of forming – more news to come soon.

Please note: The information about dates for group activities is sourced from your membership & group activities forms, if it is not correct please let CHRL know, phone 6651 1308 or email chrl@westnet.com.au

Coffs Harbour Regional Landcare Inc

Shop 5 Monterey Arcade

100 Harbour Drive

PO Box 1730

Coffs Harbour NSW 2450

Phone: 6651 1308

Fax: 6651 1305

E-mail: chrl@westnet.com.au

www.coffsharbourlandcare.org.au

Contacts

CHRL President:

Ron Smith 6653 8249

CHRL Community Support Officer:

Craig Stehn 6651 1308

CHRL Accounts & Administration:

Jude Turner (Mon & Wed) 6651 1308

Aboriginal Extension Project Officer:

Deborah Dootson 6651 6333

Northern Rivers CMA:

6653 0150

Coffs Harbour City Council, Recreational

Services Operational Technical Officer:

Jeff Holmes 6648 4541

DECC Coffs Coast Regional Park:

David Nalder 6652 0928



Coffs Harbour Regional Landcare

Bush to Beach News

With thanks to our kind supporters



CARING
FOR
OUR
COUNTRY

Coffs Harbour Regional Landcare Inc.
PO Box 1730
Coffs Harbour, 2450.

POSTAGE

PAID
AUSTRALIA